

dish || tailgater

VQ4400 & VQ4450 Owner's Manual

This manual contains detailed information on your DISH Tailgater.

To start using your DISH Tailgater right away,
see the Quick Reference Guide.



To subscribe to programming or for assistance with using the DISH Tailgater,
call 1-800-963-DISH (3474).

dish

FOR USE WITH WALLY® RECEIVERS

Designed and Manufactured by ► **KING**

PRODUCT REGISTRATION

To provide ongoing technical support and to better facilitate warranty processing, please register your product at kingconnect.com/support/product-registration.



NOTE: If you have a ViP® model receiver, you can access the DISH Tailgater with ViP Receiver Owner’s Manual by going to kingconnect.com/product/dish-tailgater and clicking on the orange “SUPPORT” box.

TABLE OF CONTENTS

INTRODUCTION	2
IMPORTANT SAFETY INSTRUCTIONS	2
DISH TAILGATER PACKAGE CONTENTS	2
APPLYING RUBBER FEET TO ANTENNA UNIT	3
ABOUT SIGNAL LOSS	3
ABOUT SATELLITE TV RECEPTION	4
CONNECTING RECEIVER TO TV	4
DISH TAILGATER SETUP	5
DISH TAILGATER OPERATION WITH NEW AND UNACTIVATED RECEIVER	6-11
DISH TAILGATER STANDARD OPERATION	12-15
PROPER CARE OF YOUR EQUIPMENT	16
SECURITY	16
ACCESSORIES	16-17
ROOF INSTALLATION	18-21
TROUBLESHOOTING	22-23
MANUFACTURER’S LIMITED WARRANTY	24
FCC GUIDELINES	24

INTRODUCTION

Thank you for choosing DISH and the DISH Tailgater Portable HDTV System!

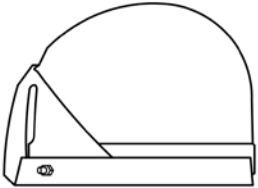




You are about to experience the excitement of DISH satellite television programming and the convenience of the DISH Tailgater portable antenna, which delivers the very best picture and sound quality wherever you go.

NEW AND UNACTIVATED RECEIVERS: First-time use of your DISH Tailgater should be at a location with good phone service, as you will need to call DISH to activate your receiver (page 9).


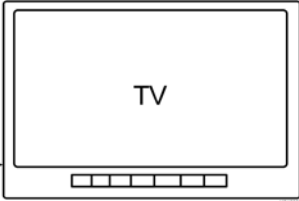

IMPORTANT SAFETY INSTRUCTIONS

1. Please read this Owner's Manual thoroughly before using the DISH Tailgater.
2. Keep this Owner's Manual and the included Quick Reference Guide in a safe place for future reference.
3. Follow all instructions and warnings. Set up and operate the DISH Tailgater in accordance with the instructions.
4. Do not power wash the DISH Tailgater. Do not submerge the DISH Tailgater or place in standing water. Hand wash only with mild soap and water. See page 16 for additional care instructions.
5. Do not operate near any indoor or outdoor heat source such as radiators, heat registers, stoves, barbecues, campfires, or other items that produce heat.
6. Servicing may be required if the unit has been dropped or damaged in any way or if the unit does not operate normally. Call KING Customer Service at (952) 345-8147.
7. Tighten all of the coax cable connections only by hand. If you use a wrench, you may overtighten the connections and damage your equipment.
8. To avoid risk of electric shock, unplug your receiver before connecting the DISH Tailgater in damp or wet conditions.

DISH TAILGATER PACKAGE CONTENTS

<p>Antenna Unit</p> 	<p>(3) Rubber Feet</p> 
	<p>35' RG-6 Coax Cable</p>
	<p>Quick Reference Guide</p>
	<p>Registration Card</p>

You will also need (sold separately):

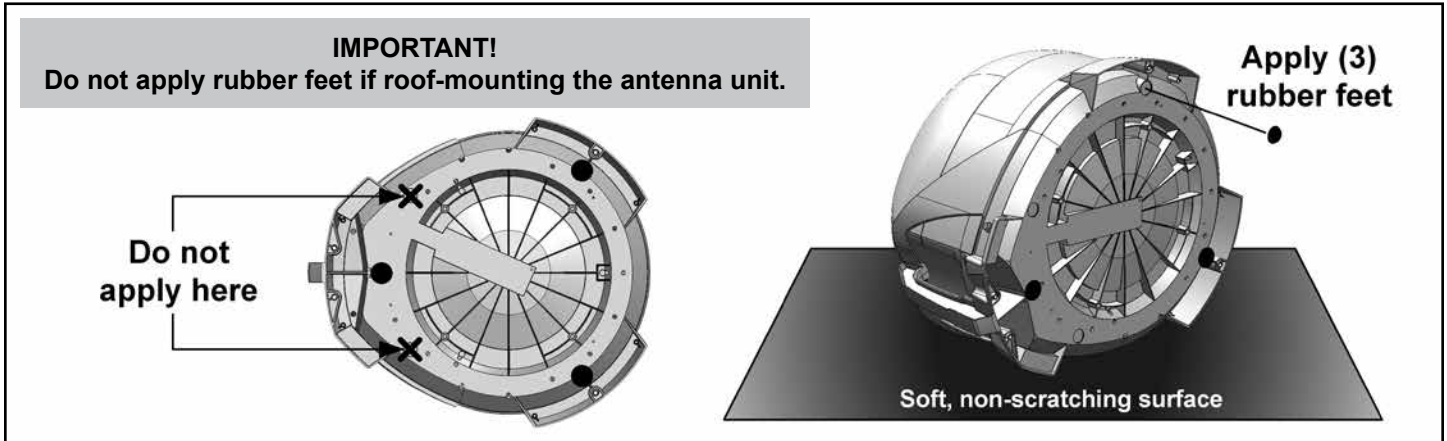
<p>DISH Programming Subscription</p> 	
	<p>Receiver to TV cable(s)</p>

NOTE: The VQ4450 includes the Wally receiver and cables.

*Model ViP 211z, ViP211k, ViP211, 411 or Wally Receiver

Receiver models compatible with the DISH Tailgater may change. This list may not be complete. Please visit kingconnect.com/dish-receivers for the most up to date receiver information.

APPLYING RUBBER FEET TO ANTENNA UNIT

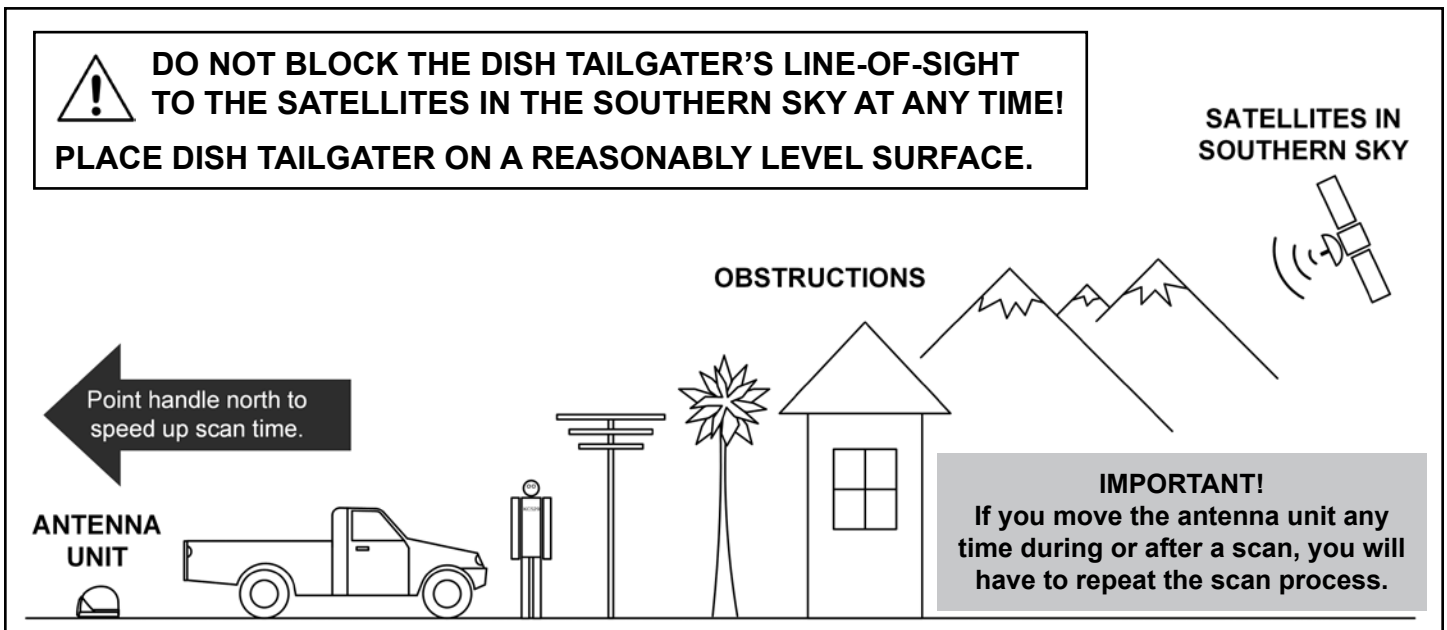


ABOUT SIGNAL LOSS

OBSTRUCTIONS

The DISH Tailgater requires an unobstructed view of the southern sky for the best signal reception.

Be sure to place the DISH Tailgater in a location free from obstructions such as people, trees, buildings, vehicles, etc. This will allow for the strongest signal and will help prevent any interruption to your programming. Point the handle approximately north to speed up scan time.



RAIN AND SNOW FADE

Though rare, heavy rain, snow, or dense cloud cover can reduce the satellite signal, which may interrupt your programming. Your programming should return as conditions improve.

ABOUT SATELLITE TV RECEPTION

Satellite television uses satellites in a geostationary orbit over the earth. This type of orbit enables the satellites to stay aligned over one place on the surface of the earth and to transmit your television programming to the DISH Tailgater when pointed at the appropriate satellite.

Your television programming is delivered from up to 3 satellites located at the 110°, 119°, and 129° west longitudes. The DISH Tailgater will automatically find and then switch between satellites as you change channels to offer you the ideal viewing experience.

Due to the low look angle for the 129 satellite in the northeastern region of the United States, you may experience difficulty viewing programming from the 129 satellite while in this area. (Programming from the 110 and 119 satellites should still be available.)

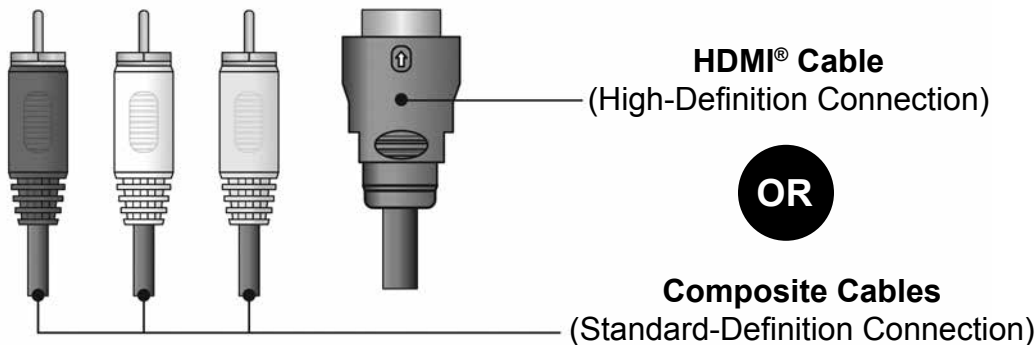
CONNECTING RECEIVER TO TV



DO NOT PLUG IN OR TURN ON RECEIVER AT THIS TIME.

1. Connect your DISH HD Solo Receiver (ViP211z, ViP211k, ViP211, 411 or Wally)* to your TV using the best connection type supported by your TV. (See your TV owner's manual for its connection options. Connection type and location may vary by model.)**

Back of Wally Receiver



Compatible receiver models
on KING website



* Receiver models compatible with the DISH Tailgater may change. This list may not be complete. Please visit kingconnect.com/dish-receivers for the most up-to-date receiver information.

** Your receiver may also have standard-definition "TV SET OUT" and "S-VIDEO" ports, and high-definition "COMPONENT" ports to view video. See your receiver Owner's Manual for more information.

Images shown may vary by receiver model.

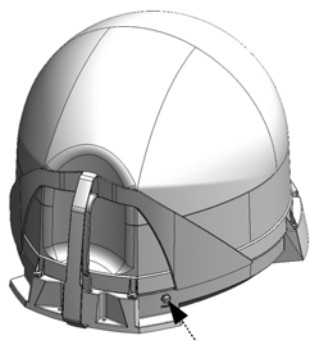
DISH TAILGATER SETUP

The DISH Tailgater requires an unobstructed view of the southern sky for signal reception. Be sure to place the DISH Tailgater in a location free from obstructions such as trees, buildings, etc. (See page 3.) Point the handle approximately north to speed up scan time.

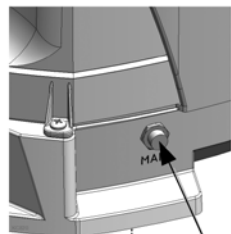


HANDTIGHTEN COAX. OVERTIGHTENING CAN DAMAGE CONNECTIONS.

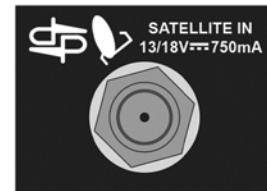
1. Connect one end of the supplied RG-6 coax cable to the MAIN port on the DISH Tailgater and place in position. It is recommended you use only the supplied RG-6 coax cable.
2. Connect the other end of the supplied coax cable to the **SATELLITE IN** port on your receiver.



Right Rear of DISH Tailgater



Back of Wally Receiver



Connect to SATELLITE IN only!

Supplied RG-6 coax

- Do not put the DISH Tailgater where it can be bumped, knocked over or struck by a person or vehicle.
- Do not put the DISH Tailgater near any heat sources.
- Do not route the coax cable where it can be tripped on or run over by a vehicle.
- Do not overtighten the coax cable connections.
- Do not put sharp bends or kinks in the coax cable.



NOTE: Place the DISH Tailgater on a stable and reasonably level surface with a clear view of the southern sky. When placing the DISH Tailgater in position, be sure surface is dry and free of loose dirt or sand.

3. Plug your receiver into a 110 volt AC power source.
 - The green power light on your receiver should illuminate or begin cycling on and off.
 - Wait for the green light to turn solid. This may take up to two minutes.
 - If it does not turn solid, power on your receiver using the front panel POWER button. (On ViP211z models, this is located behind the door panel.)



Front of Wally Receiver

4. Plug in and turn on your TV.

In your TV's input selection menu, choose the input that matches the connection from your receiver. (Example: If using an HDMI cable from your receiver, choose the HDMI input on your TV.) See your TV Owner's Manual for details.

DISH TAILGATER OPERATION WITH NEW AND UNACTIVATED RECEIVER



IF YOUR RECEIVER IS NEW AND UNACTIVATED, START HERE.

Otherwise, go to STANDARD OPERATION on page 12.



WHILE IN USE, DO NOT BLOCK THE DISH TAILGATER'S LINE-OF-SIGHT TO THE SATELLITES IN THE SOUTHERN SKY AT ANY TIME!

SATELLITES IN SOUTHERN SKY



OBSTRUCTIONS

Point handle north to speed up scan time.

ANTENNA UNIT



IMPORTANT!
If you move the antenna unit any time during or after the scan, you will have to repeat the scan.

NOTE: If you have a VIP model receiver, you can access the DISH Tailgater with ViP Receiver Owner's Manual by going to kingconnect.com/product/dish-tailgater and clicking on the orange "SUPPORT" box.

1. After connecting and turning on your equipment as instructed on pages 4-5 the Wally Startup screens will appear (this may take several minutes).

IMPORTANT!

Your TV screen may look different from what is shown in this manual. Screen information may vary depending on choices you make during the setup process.

For best results, follow the on-screen instructions.

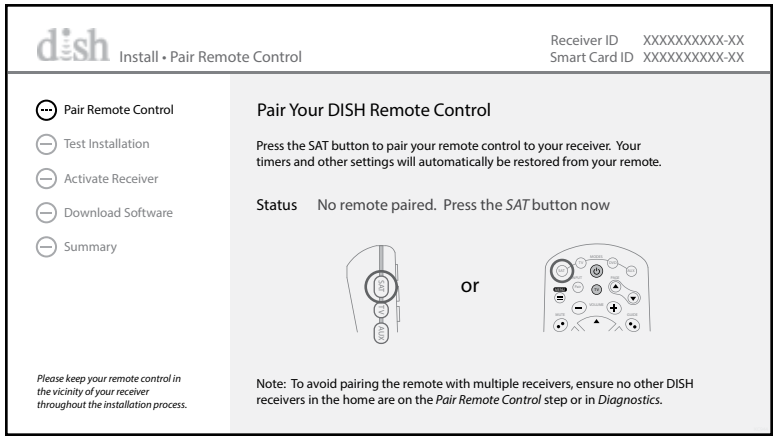


Starting Up...

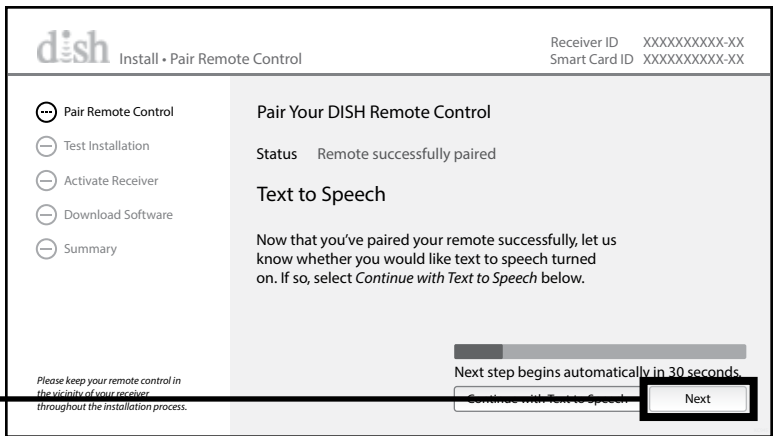
Starting up... 9999

2. Follow the on-screen instructions to pair your remote control.

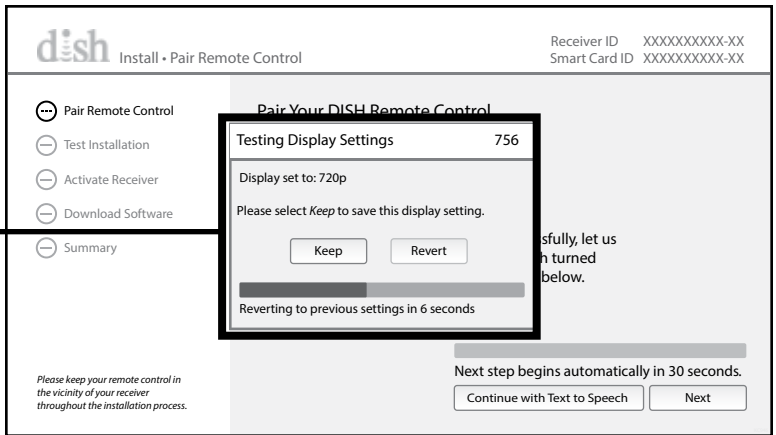
IMPORTANT!
If present, pull out the protective battery tab from the battery compartment on the back of the remote.



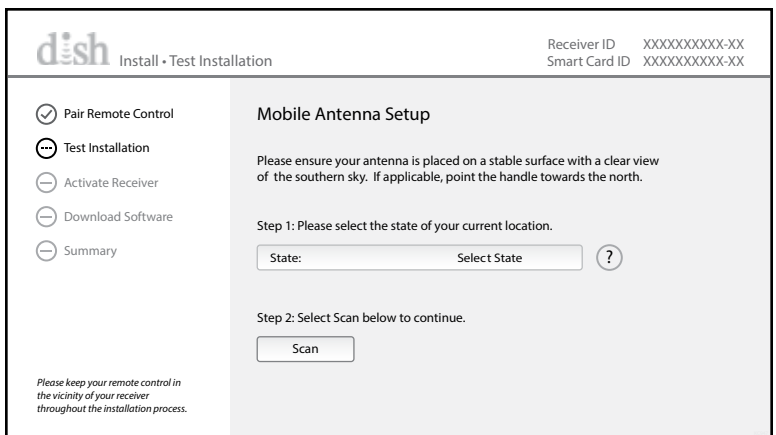
3. Use the arrow buttons to highlight "Next" and press **Select**.



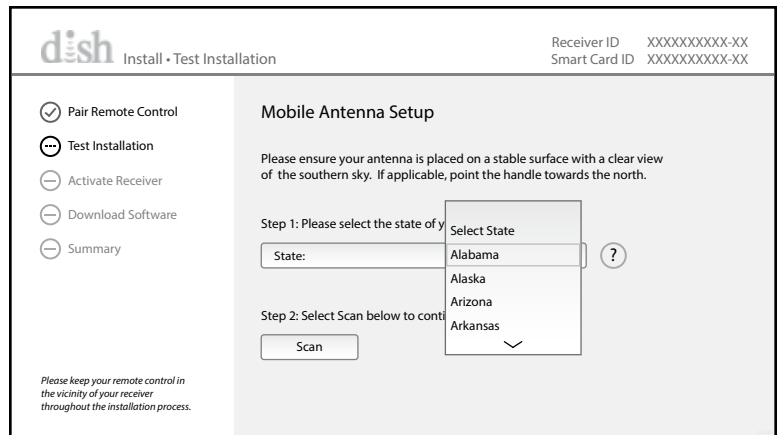
4. Follow the on-screen instructions to select your display resolution.



5. The Mobile Antenna Setup screen will appear.

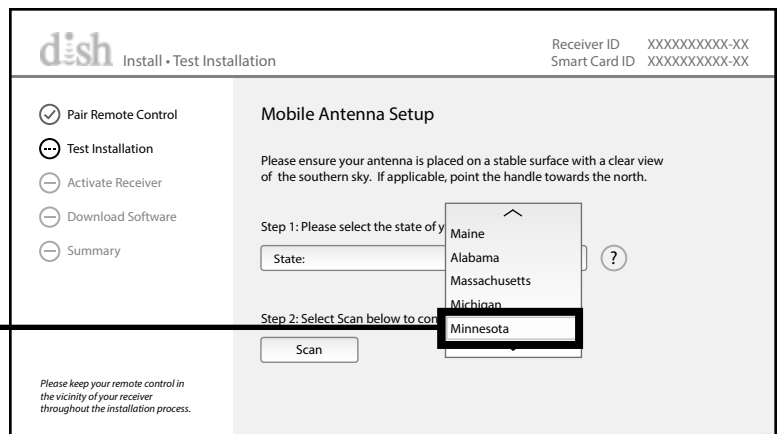


6. Press **Select** to open the state menu.

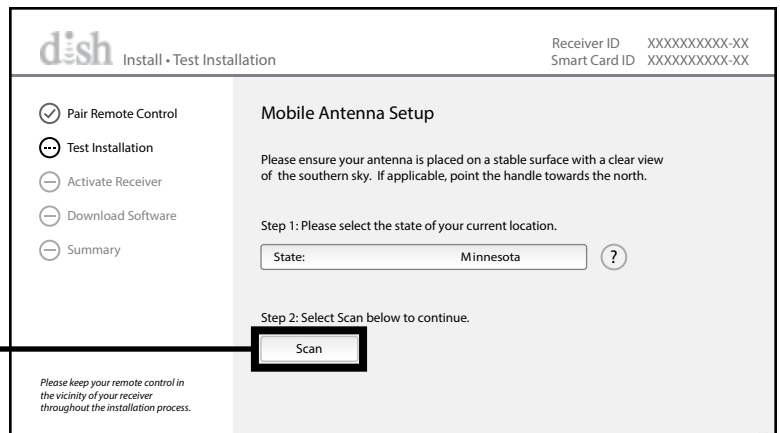


7. Use the arrow buttons to highlight the state you are currently in. (Example shown: Minnesota)

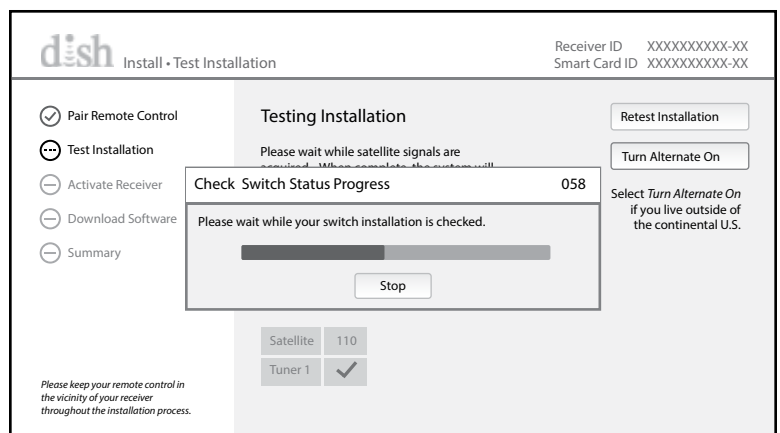
Press **Select**. The chosen state will be saved.



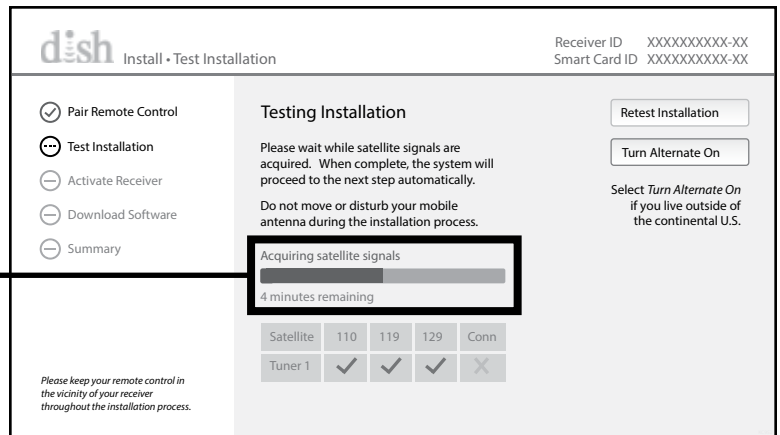
8. Use the arrow buttons to highlight "Scan" and press **Select**.



This screen will appear while the antenna scans for satellites.

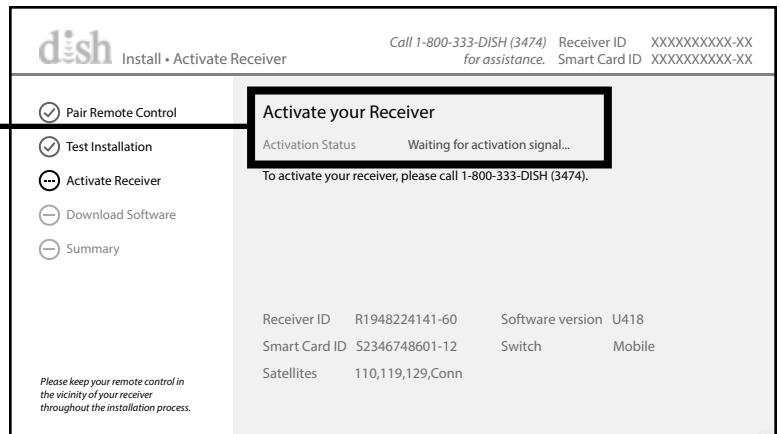


The satellite signals are being acquired. When complete, the system will proceed to the next step automatically.



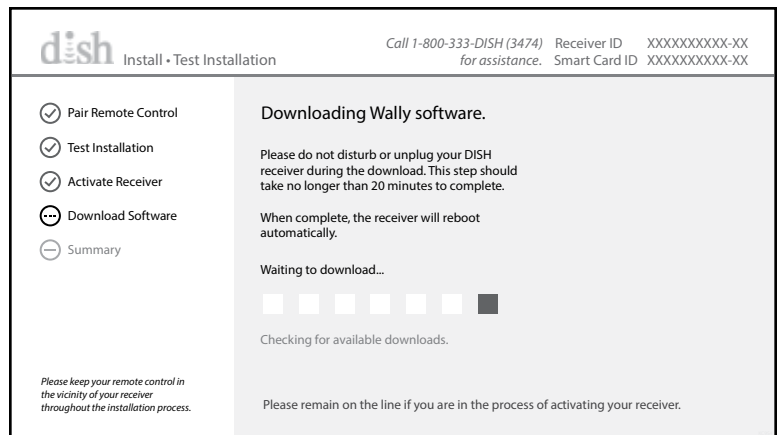
9. You are now ready to activate your receiver. Call a DISH mobile antenna specialist to activate your receiver.

1-800-963-DISH (3474)



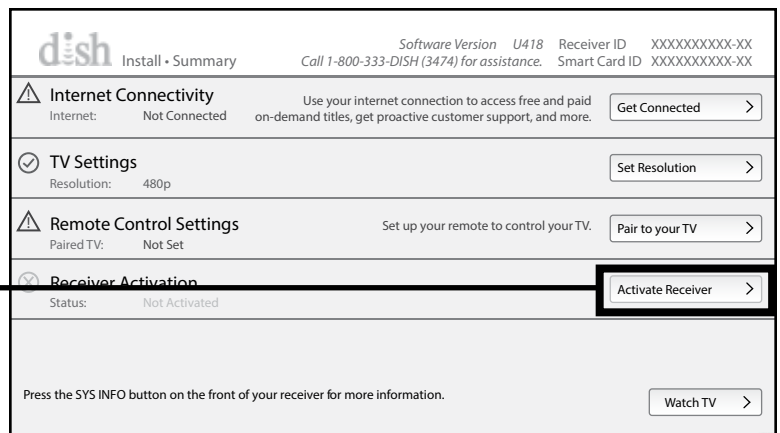
After calling to activate your receiver, a software download will begin.

Do not disturb or unplug your receiver during this process!



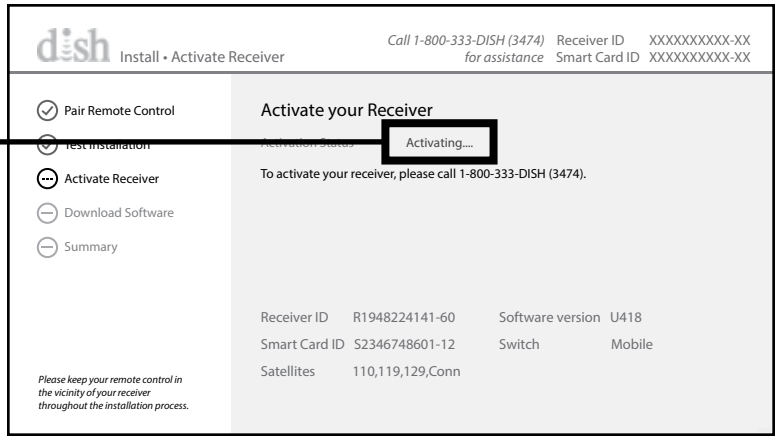
10. When the download is complete, the installation summary will appear.

Use the arrow buttons to highlight "Activate Receiver" and press **Select**.

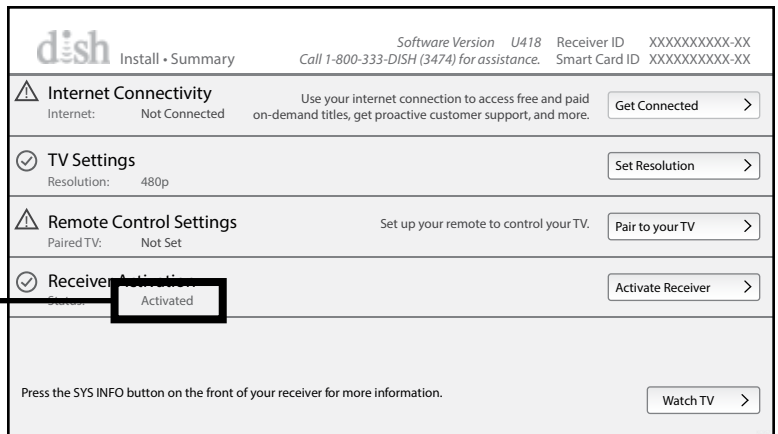


The receiver activates.

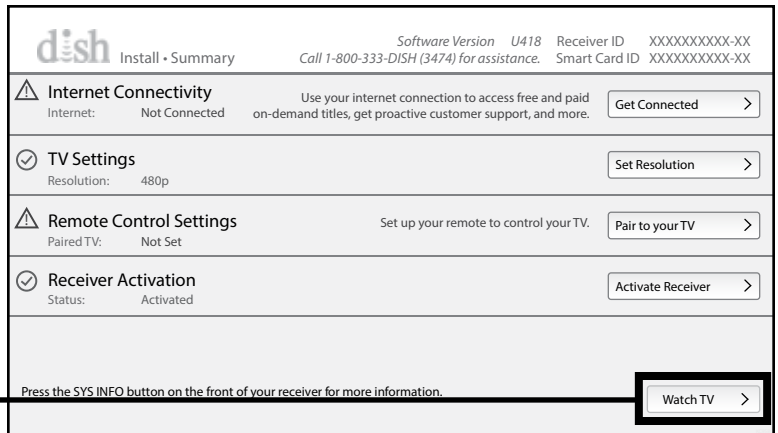
This may take a while.
PLEASE BE PATIENT.



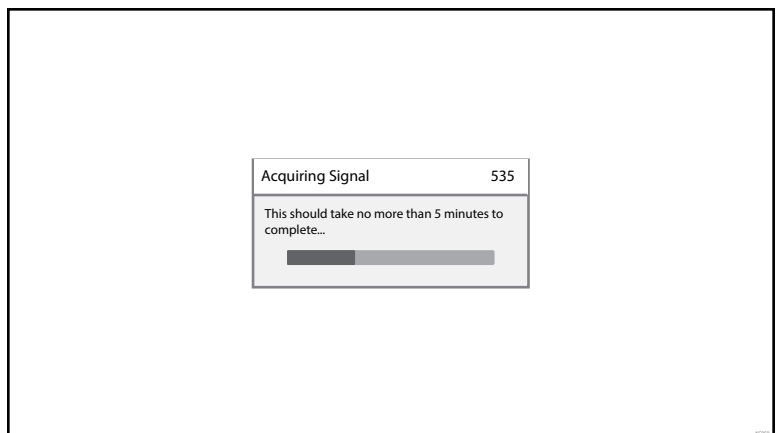
The installation summary screen confirms receiver activation.



11. Use the arrow buttons to highlight "Watch TV" and press **Select**.



The receiver will acquire signal.



12. Watch TV!



NOTE: Your Wally should have downloaded its program guide already. Check and make sure the full guide is available. If it is not, you will need to reset the Wally for it to download the full guide.

If there is a software update available for your Wally, it will automatically download when you put your Wally in standby mode.

You can now use STANDARD OPERATION on page 12.

DISH TAILGATER STANDARD OPERATION



IF YOUR RECEIVER IS NEW AND UNACTIVATED, MAKE SURE TO DO THE FIRST-TIME SETUP PROCEDURE ON PAGES 6-11 FIRST.



WHILE IN USE, DO NOT BLOCK THE DISH TAILGATER'S LINE-OF-SIGHT TO THE SATELLITES IN THE SOUTHERN SKY AT ANY TIME!

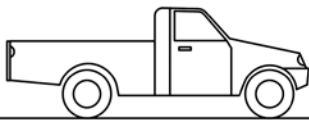
SATELLITES IN SOUTHERN SKY



OBSTRUCTIONS

Point handle north to speed up scan time.

ANTENNA UNIT



IMPORTANT!
If you move the antenna unit any time during or after the scan, you will have to repeat the scan.

NOTE: If you have a ViP model receiver, you can access the DISH Tailgater with ViP Receiver Owner's Manual by going to kingconnect.com/product/dish-tailgater and clicking on the orange "SUPPORT" box.

1. After connecting and turning on your equipment as instructed on pages 4-5, the Wally Startup screens will appear (this may take several minutes).

IMPORTANT!

Your TV screen may look different from what is shown in this manual. Screen information may vary depending on choices you make.

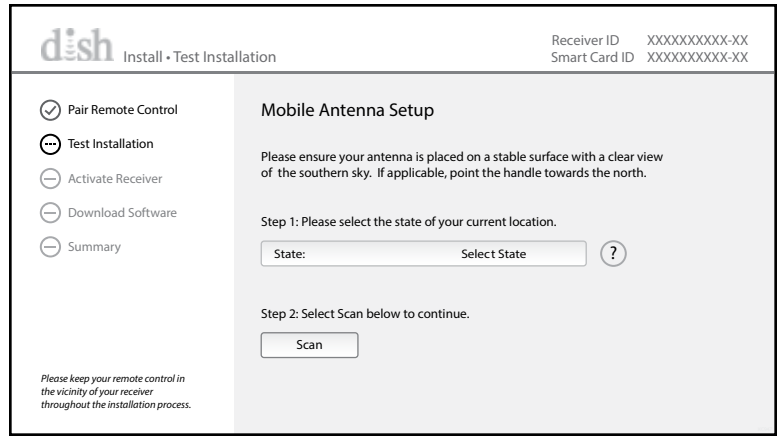
For best results, follow the on-screen instructions.



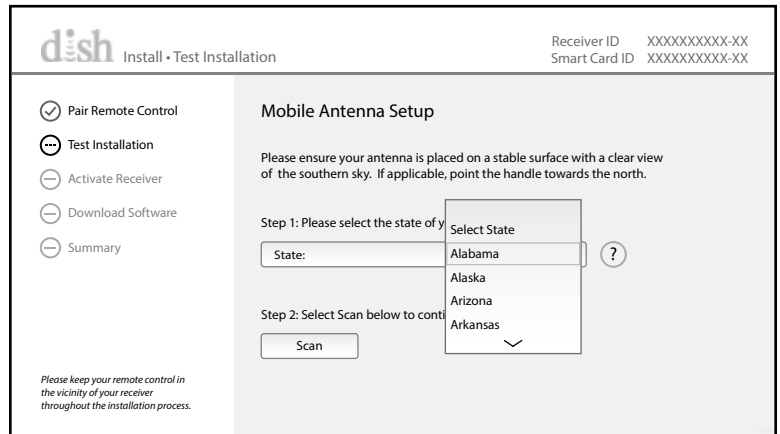
Starting Up...

Starting up... 9999

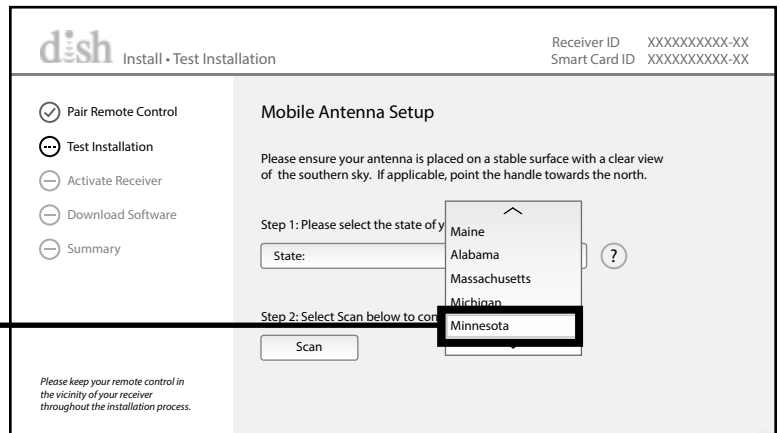
The Mobile Antenna Setup screen will appear.



2. Press **Select** to open the state menu.

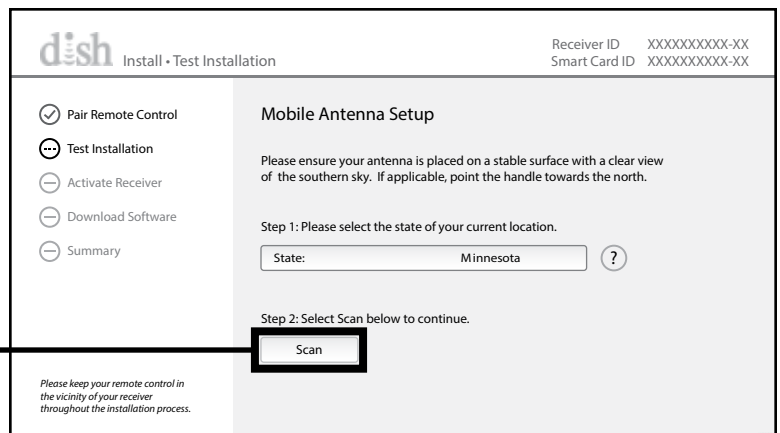


3. Use the arrow buttons to highlight the state you are currently in. (Example shown: Minnesota)



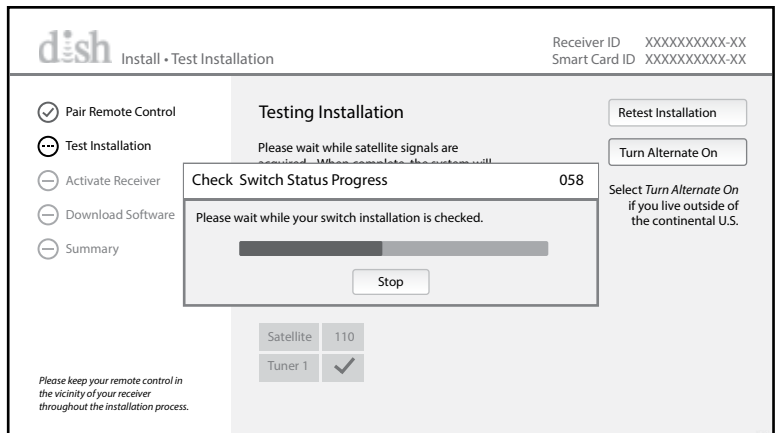
Press **Select**. The chosen state will be saved.

4. Use the arrow buttons to highlight "Scan" and press **Select**.

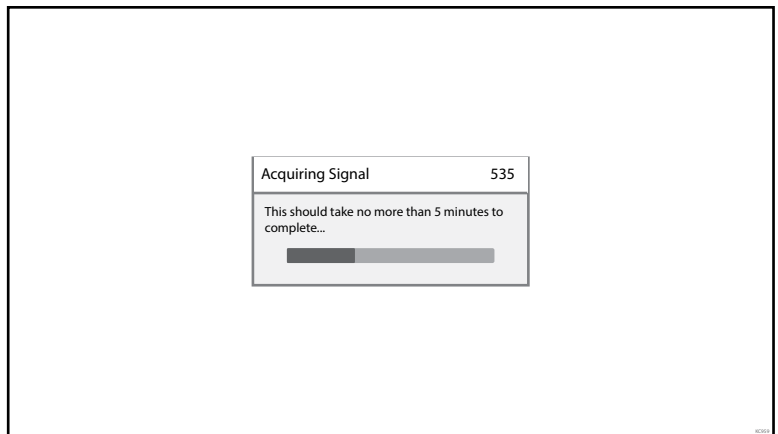


STANDARD OPERATION

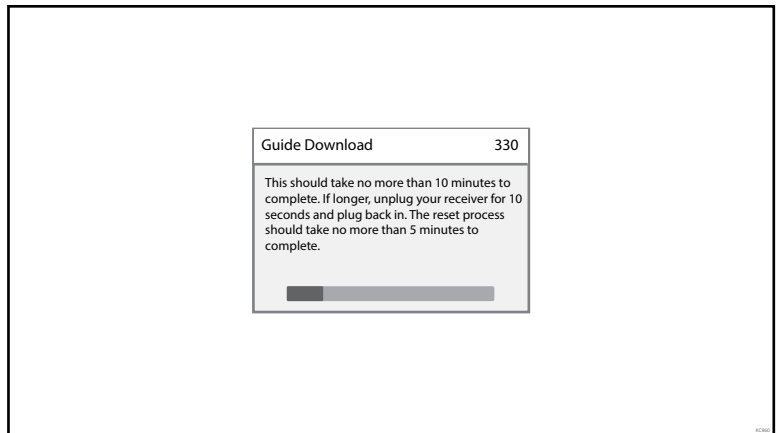
This screen will appear while the antenna scans for satellites.



The receiver will acquire signal.



The program guide will download.



5. Watch TV!



OPERATING NOTES:

If you move the DISH Tailgater while in use, or get a screen indicating complete signal loss, you will have to perform a new scan to restore programming by going to the Mobile Antenna Setup screen as follows:

Press the HOME button to return to the home page. Choose “Settings” and then “Diagnostics.” Choose “Dish 3” and then “Test Installation 5.” This will take you back to the Mobile Antenna Setup screen. Initiate a new scan.

When in the northeastern United States, television programming from the 129 satellite may not be available (see page 4).

If your system is inactive for an extended period of time, you may have to call DISH Customer Service at 1-800-333-DISH (3474) to reauthorize your receiver.



If your receiver has not been used for a while the 013 error message may appear. Call 1-800-333-DISH (3474) and follow the prompts to reauthorize your receiver. Note that if channel 101 appears, scroll channel up or down to make sure 013 error message does not appear.

You can view your programming when your receiver has been authorized and the guide has finished downloading.

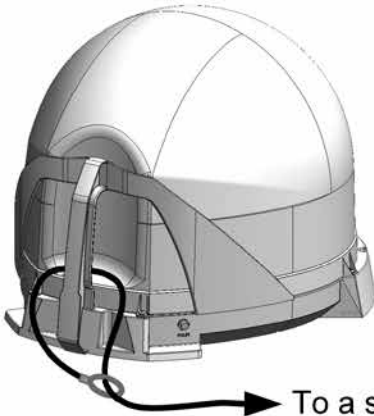
PROPER CARE OF YOUR EQUIPMENT

1. Always handle the DISH Tailgater product carefully. Do not drop the DISH Tailgater. Avoid excessive shock or vibration to the DISH Tailgater.
2. Use caution when carrying the DISH Tailgater. Always carry the DISH Tailgater by the handle.
3. Do not remove the cover of the DISH Tailgater without authorization. Doing so will void the Limited Warranty.
4. Do not stack the DISH Tailgater on top of or below other electronic devices as this can cause heat buildup or block the satellite signal from reaching the DISH Tailgater.
5. Never power wash the DISH Tailgater. Keep the enclosure clean from dirt, bugs, and other debris by hand washing with mild soap and water.
6. Do not coat or paint the DISH Tailgater with any substance. KING **Dome Magic**[®] (KING #1830-SP) may be applied to the DISH Tailgater to help keep snow and rain from building up on the surface.

The DISH Tailgater has been designed to be maintenance and trouble free. If not using the DISH Tailgater for long periods of time, it is recommended that you set up the system on a quarterly basis (every three months) to keep all moving parts of the DISH Tailgater in good working order.

If you have any comments or questions, please contact KING Customer Service at (952) 345-8147, or by email at help@kingconnect.com.

SECURITY



The DISH Tailgater can be secured to an object by looping a cable thru the handle.

NOTE: The optional KING AL1000 Alarm is also available (see next page).

→ To a secure object

Cable sold separately.

ACCESSORIES (Sold separately - see the satellite antenna accessories page at kingconnect.com)

TR1000

Tripod Mount

Allows you to position your DISH Tailgater almost anywhere for best line-of-sight to satellite. Keeps antenna off the ground away from moisture.

DISH Tailgater not included.



CB1000

Carry Bag

DISH Tailgater fits securely inside. Features include zippered cover, foam padding, carry handles and pockets for cables, receiver and remote.

DISH Tailgater not included.



AL1000

Alarm



The KING AL1000 Alarm goes in-line between your powered receiver and the DISH Tailgater.

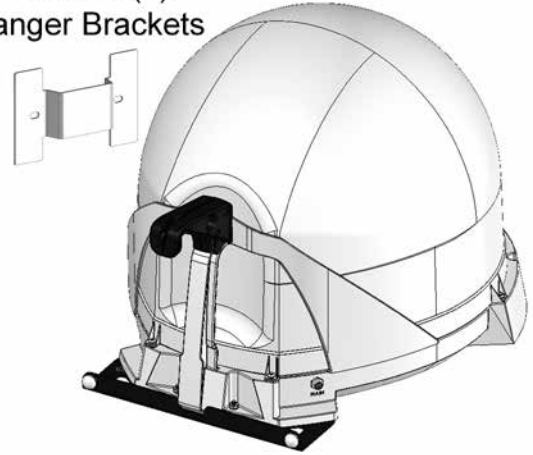
It will sound an alarm if the coax is disconnected from the DISH Tailgater.

DISH Tailgater not included.

MB500

Mounting Bracket

Includes (2)
Hanger Brackets



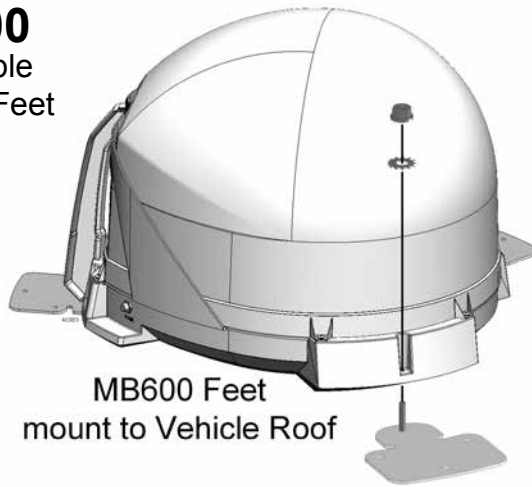
Allows hanging of antenna unit on vehicle window or included hanger bracket.

For stationary use only.
Vehicle must not be in motion while antenna unit is on window or hanger bracket.

DISH Tailgater not included.

MB600

Removable
Mounting Feet



MB600 Feet
mount to Vehicle Roof

The MB600 removable mounting feet allow semipermanent mounting of your DISH Tailgater on your vehicle roof.

DISH Tailgater not included.

MB700

Quick Release
Roof-Mount Kit

Allows you to easily use your DISH Tailgater as either a roof-mounted or portable antenna.

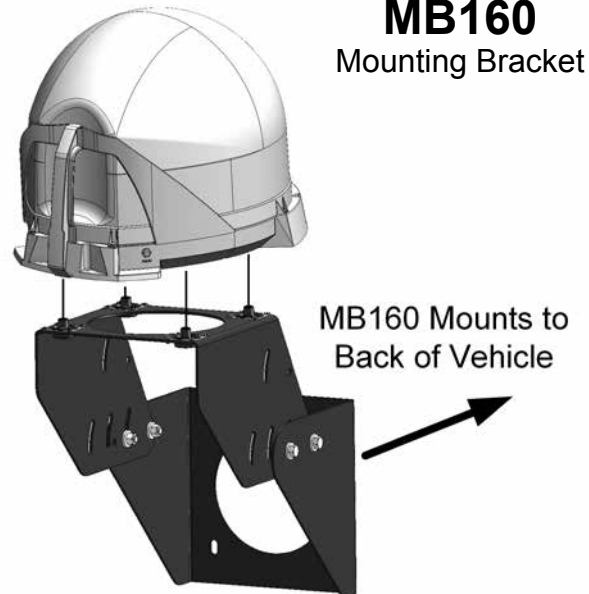
DISH Tailgater not included.



MB700 permanently
mounts to Vehicle Roof

MB160

Mounting Bracket



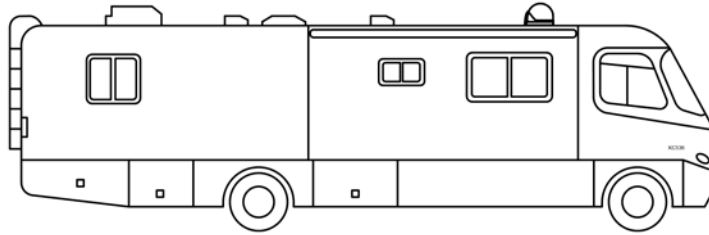
MB160 Mounts to
Back of Vehicle

The DISH Tailgater is not compatible with the MB100 Mounting Bracket. Use of the MB100 will void warranty.

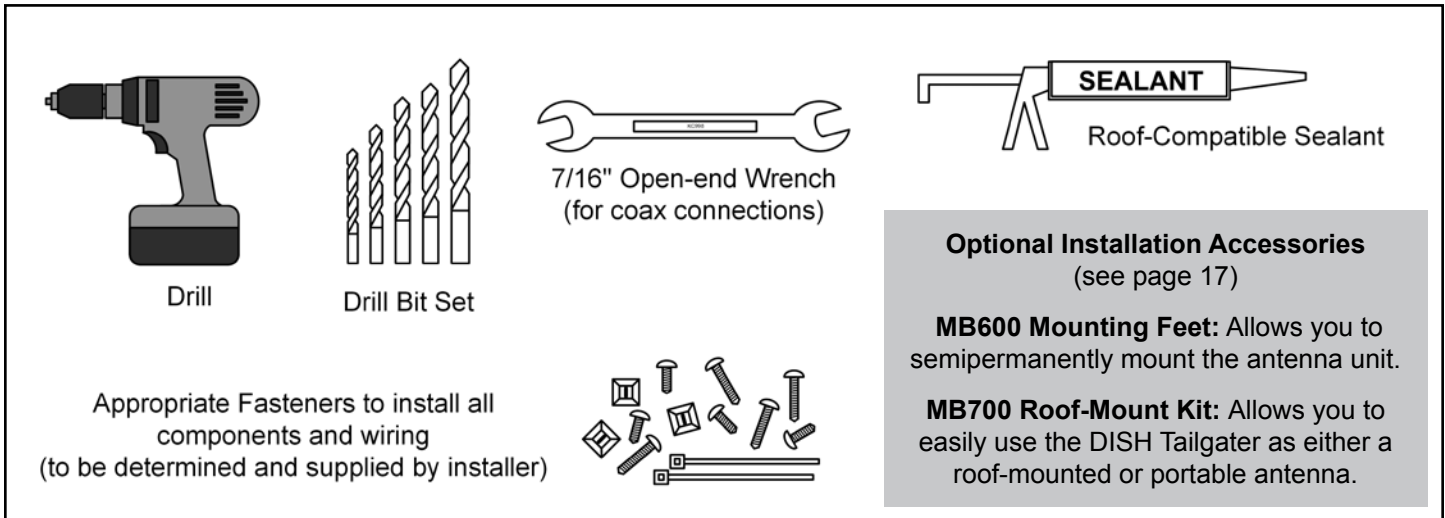
The use of any unauthorized mounting bracket will void warranty.

DISH Tailgater not included.

ROOF INSTALLATION



1. Make sure you have the following tools and materials before starting.



NOTE: Many RVs are prewired with RG-6 coax cable for satellite antennas. Contact the manufacturer of your RV or your local dealer to verify where this cable is located.

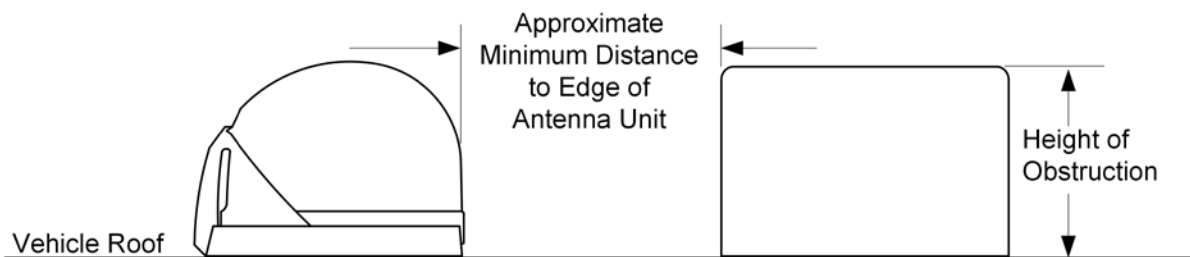
If prewired, run the existing coax cable from the prewire location in the roof to the antenna unit. When choosing the antenna unit location, make sure the prewiring will reach the antenna unit.

ANTENNA UNIT LOCATION (see illustration on next page)

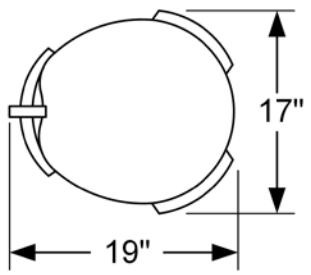
2. Select an area on the roof for the antenna unit and the location where the wiring will enter the vehicle through the roof to the satellite receiver inside using the following criteria:
 - A shorter distance between the antenna unit and the satellite receiver is most desirable.
 - Make sure you have enough room to mount the antenna unit.
 - The antenna unit should be mounted on the center line of the vehicle, and not tilted more than 2 degrees in any direction.
 - There must be no line-of-sight obstructions. Air conditioning units, other antennas, and storage areas that are too close to the antenna unit may prevent the satellite signal from reaching the antenna unit.
 - Mount the antenna unit with the handle to rear of the vehicle.

ANTENNA UNIT LOCATION

HEIGHT OF OBSTRUCTION	APPROXIMATE MINIMUM DISTANCE TO EDGE OF ANTENNA UNIT
10"	8"
11"	10"
12"	12"
13"	14"
14"	16"
15"	18"
16"	20"

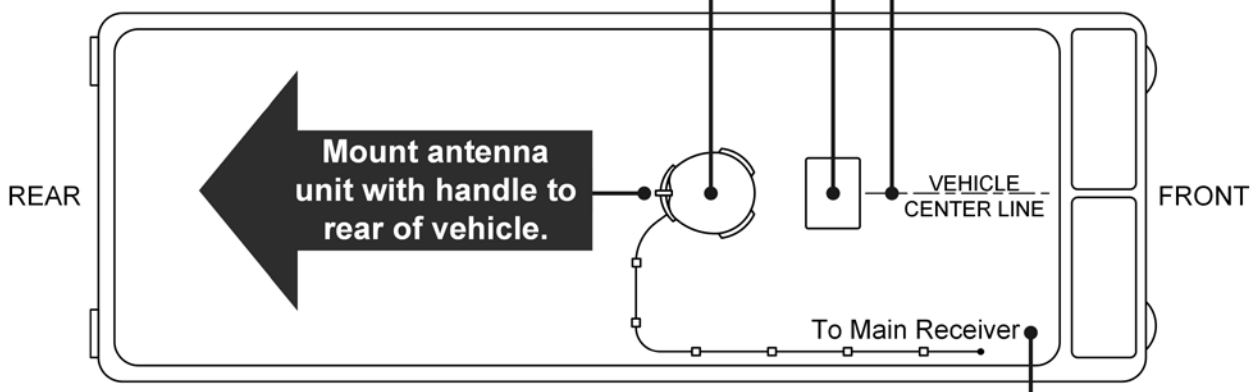


Do not mount antenna unit too close to obstructions.



Choose a location with adequate space.

Mount antenna unit on center line of vehicle.



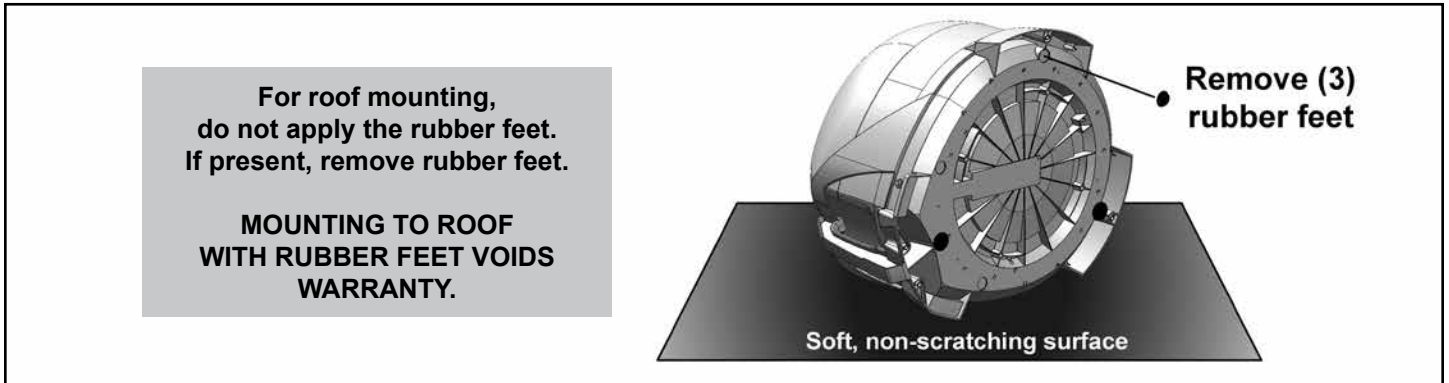
Mount antenna unit with handle to rear of vehicle.

Try to install antenna unit as close as possible to main receiver to minimize coax length.

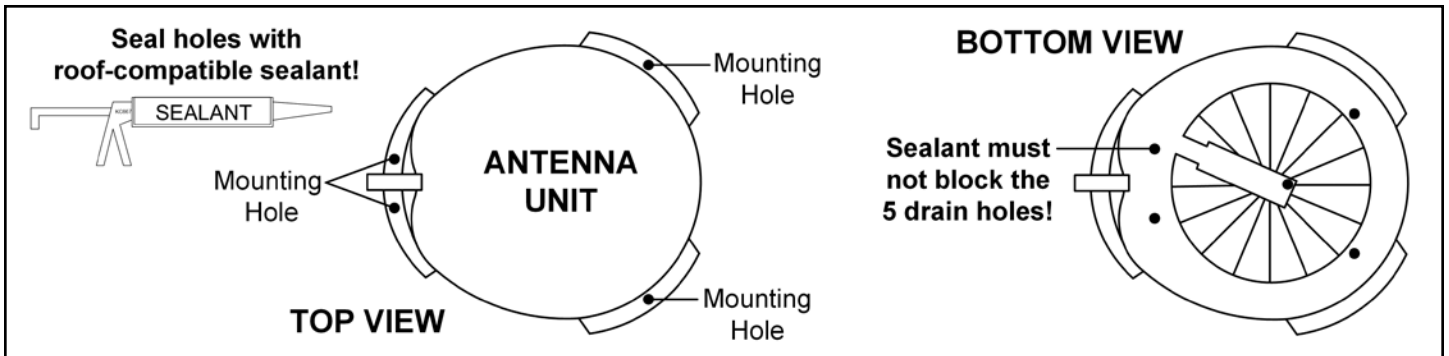
The installer is responsible for determining the most appropriate fastener to secure the antenna unit to the roof. Depending on the roof material, fasteners such as lag screws, well nuts, sheet metal screws, toggle bolts and T anchors may be used, and should always be used in combination with a roof-compatible sealant.

IMPORTANT! The installer is responsible for weatherproofing all holes (except drain holes) with sealant.

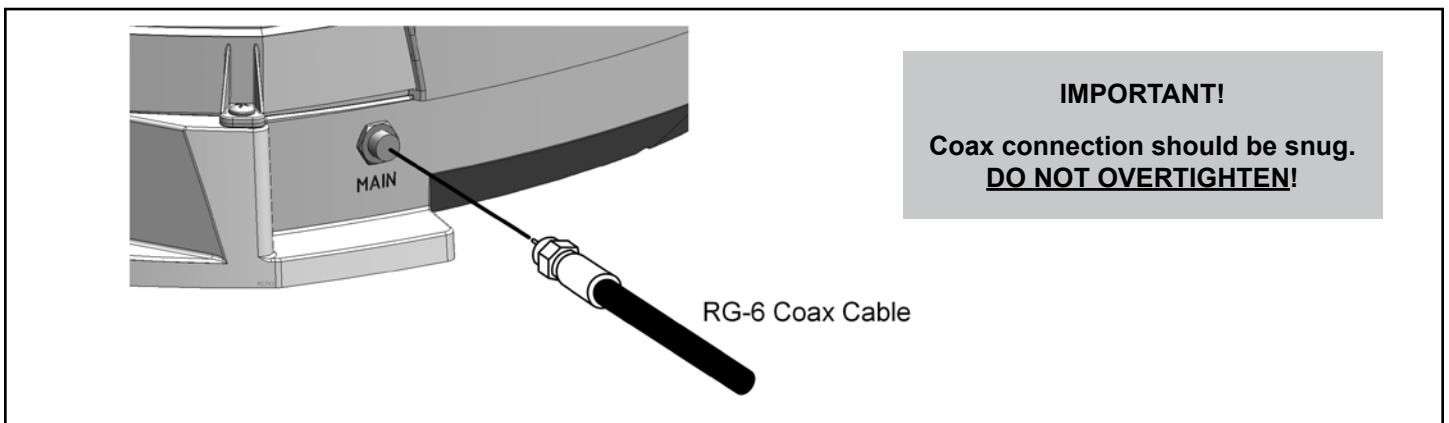
3. If the rubber feet have been installed, lay the unit on a soft, non-scratching surface and remove them from the bottom of the unit. **DO NOT INSTALL UNIT ON ROOF WITH RUBBER FEET IN PLACE.**



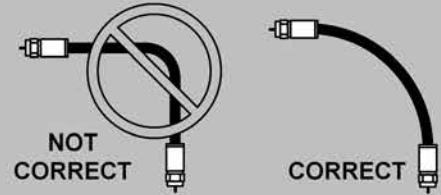
4. Mount the antenna unit using the (4) mounting holes. Make sure to seal mounting holes with roof-compatible sealant. **DO NOT BLOCK THE (5) DRAIN HOLES WITH SEALANT.**



5. Connect one end of 35 foot coax cable to the MAIN port and tighten connection. **DO NOT OVERTIGHTEN.**

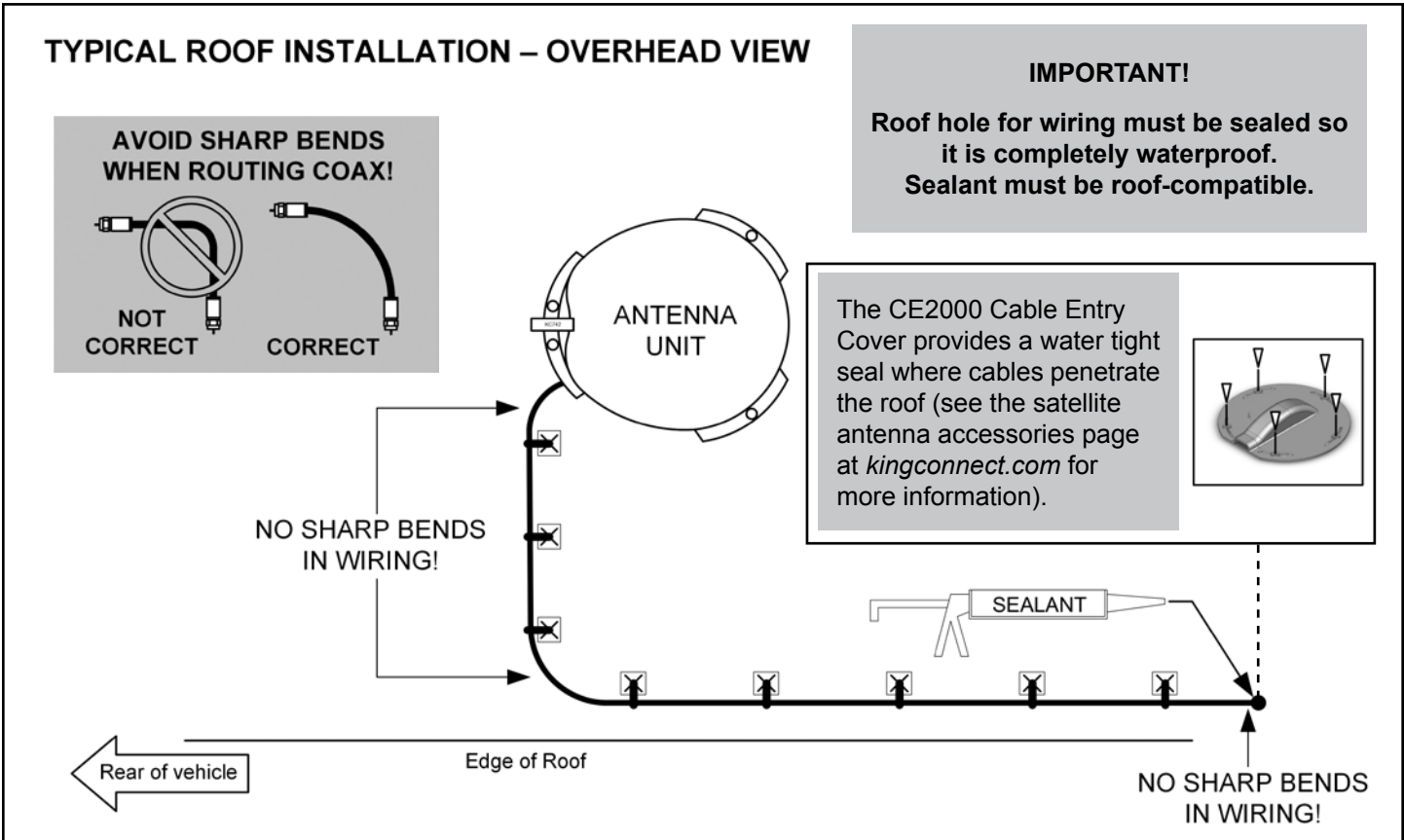


AVOID SHARP BENDS WHEN ROUTING COAX!



- Run coax from the antenna unit to the roof edge, then along edge to location where it will be fed into the vehicle. Secure coax to roof every 12-18 inches (see below).
- Drill a 3/4" hole through the roof and into the cabinet where receiver is stored. Feed coax down through hole. Seal the opening with roof-compatible sealant so that it is completely waterproof (inside and outside of the 3/4" hole).

TYPICAL ROOF INSTALLATION – OVERHEAD VIEW



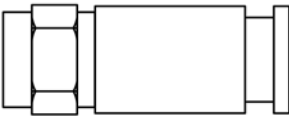
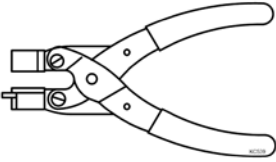
- Inside vehicle, connect coax cable to the receiver.

IMPORTANT!

You can cut the coax to length, but you must terminate the coax with Snap-n-Seal Connectors.

SNAP-N-SEAL® CONNECTOR

CRIMPER

Thomas and Betts part # SNS 1P6

Thomas and Betts part # SNSUTL

Connector and crimper sold separately.

9. Installation is complete! Go to DISH TAILGATER OPERATION Section and watch TV!

TROUBLESHOOTING

Symptom/Message	Possible Cause	Troubleshooting
"SmartCard Not Inserted" message (021) on startup.	SmartCard is not fully seated in Wally slot.	Your SmartCard is located on the left side of the Wally. Pull out the SmartCard and insert it back into the slot. Make sure the arrow on the SmartCard is facing up and is inserted first into the receiver. If there is not a SmartCard in your receiver please call 1-800-333-DISH.
Remote Not Working.	Remote is in wrong mode.	If you think the remote is paired, but in the wrong mode, press the "SAT" button on the left side of the remote.
	Your batteries may need to be replaced.	Check to make sure the batteries are properly inserted in your remote. If "SAT" on the front top of the remote does not light up when you press the SAT button on the left side of the remote, replace the batteries.
	Your remote is not currently paired with your receiver.	To pair your remote, press the "SYS INFO" button on the front of the Wally and then press the "SAT" button on the left side of your remote.
Complete Signal Loss - 015A	Obstructions to the DISH Tailgater's view of the southern sky, such as tree branches, severe rain, etc.	Make sure nothing is blocking the DISH Tailgater's view of the southern sky, such as tree branches, severe rain, or other obstructions.
	Coax cable not connected properly between your Wally and the DISH Tailgater.	Check that the coax cable between your Wally and the DISH Tailgater is connected properly and handtightened.
	You have selected a local channel but are outside of its spot beam area.	First, verify you have reception by selecting a nationally broadcast channel (CNN, ESPN, etc.). Then call DISH at 1-800-333-DISH to have your locals switched to your current area.
	DISH Tailgater has been moved.	If DISH Tailgater has been moved, initiate a new scan.
Channel Signal Loss - 004	DISH Tailgater has not tracked to the appropriate orbital slot upon channel change.	There may be an obstruction blocking signal from the newly chosen satellite. Verify there are no obstructions, or move DISH Tailgater to have a better view of southern sky and initiate a new scan. Once your system has found its satellites, it may take a few minutes to download the program guide and acquire signal before live TV appears.

Symptom/Message	Possible Cause	Troubleshooting
Unable to Access Feature - 024	Feature not downloadable.	Keep receiver in standby for 1 hour.
Sporting Event Blackout - 744	Blackout patterns are applied based on the physical address on your account. Events outside the area surrounding your physical address may not be available.	N/A
OTA Tuner Module Not Detected - 978	An over-the-air (OTA) tuner module has been removed.	Reinstall OTA tuner module. When this is complete the Wally will request to be reset. Select YES to reset the Wally.
OTA Channel Signal Lost - 739	The signal has been lost for this over-the-air channel. This can be due to relocation or realignment of the antenna.	Reposition antenna into optimal position to get clearest signal. May need to scan again for OTA channels.
	Possible obstruction of the signal.	Remove obstruction from signal path.
Outside of Viewing Area - 120	You are outside of the viewing area of currently available channels.	Call DISH at 1-800-333-DISH to have your locals switched to your current area.
Local Channels Interrupted - 536		Call DISH at 1-800-333-DISH to have your locals switched to your current area.
Missing Channels.	The program guide may not be set to "My Channels."	Press the GUIDE button on your remote twice to display the "Favorite Channels" menu. Select "None" or one of your favorite channels list.
	You may not have the orbital slots required to view the missing television programming.	Confirm that you subscribe to the missing channel by using dish.com/mychannels .
Low Signal Strength.	Because of the small size of the highly portable DISH Tailgater, signal strength may not be as strong as with a fixed home antenna.	N/A

MANUFACTURER'S LIMITED WARRANTY

Every new DISH Tailgater Satellite System is thoroughly inspected and tested before leaving the factory, and is covered by the following limited warranty from the date of original purchase:

- Two-year parts warranty: The customer is not responsible for the cost of replacement parts if the original part is determined to be defective under the terms of the warranty. The customer is responsible for the cost of replacement parts after two years.
- One-year labor warranty: The customer is not responsible for labor costs to repair unit if unit falls under the terms of the warranty. The customer is responsible for all labor costs after one year.

Only KING and certified dealers may perform warranty evaluations and repairs. Depending upon the problem, KING may authorize a dealer to perform the necessary repairs. Any warranty labor outside of that performed at the factory is not covered unless 1) the product has been installed by an authorized dealer/installer or OEM manufacturer and 2) the dealer/installer receives prior authorization to perform the repair.

A certified dealer must not perform any repair without first contacting KING for a Service Order Number. KING will advise the dealer on how to proceed with any repairs.

Should any trouble develop during the warranty period, contact KING at (952) 922-6889. You must contact KING before the warranty period expires. The customer must supply proof of purchase (such as a dated sales receipt) when requesting warranty service. If the customer cannot supply proof of purchase, warranty period shall start 30 days after date of manufacture.

If it is determined that the unit needs to be returned to KING, customer must return COMPLETE product, freight prepaid, to:

KING, 11200 Hampshire Avenue South, Bloomington, MN 55438-2453.

If inspection shows the trouble is caused by defective workmanship or material, KING will repair (or at its option, replace) without charge.

When returning product, KING will supply an RMA number (Return Merchandise Authorization). This number must be clearly written on the box. Failure to clearly write RMA number on box will result in delays in processing claim. Along with product, the customer should include in the box: his/her name, address, daytime phone number, proof of purchase and description of the problem.

This warranty does not cover installation and external wiring, or remanufactured units. This warranty does not cover damage caused by the use of an accessory other than a KING accessory designed for the product. This warranty is not transferable from the original owner.

Due to the expanding and changing TV market, KING cannot be held responsible for changes made to satellite services. Software updates to address such issues are not covered under warranty.

This warranty also does not apply where:

- The product has been abused, misused, improperly installed or improperly maintained.
- The product has been used with an accessory other than a KING accessory designed for the product.
- Repairs have been made or attempted by others that are not certified by KING to do such repairs.
- Repairs are required because of normal wear and tear.
- Alterations have been made to the product.
- The product or any associated component has been opened without authorization or disassembled to any degree.
- Damage has been caused by power washing.
- Circumstances beyond the control of KING cause the product to no longer operate correctly.
- Customer is not the original owner.

In no event shall KING be liable for any indirect, incidental, or consequential damages from the sale or use of the product. This disclaimer applies both during and after the term of the warranty.

KING disclaims liability for any implied warranties, including implied warranties of "merchantability" and "fitness for a specific purpose," after the two year term of this warranty.

This warranty gives you specific legal rights, and you may also have other rights, which vary from state to state. Some states do not allow the exclusion or limitation of incidental or consequential damages, so the above limitation or exclusion may not apply to you. Some states do not allow limitations on how long an implied warranty lasts, so the above limitation may not apply to you.

FCC GUIDELINES

This equipment has been tested and found to comply with the limits for a Class B digital device, pursuant to part 15 of the FCC Rules. These limits are designed to provide reasonable protection against harmful interference in a residential installation. This equipment generates, uses and can radiate radio frequency energy and, if not installed and used in accordance with the instructions, may cause harmful interference to radio communications. However, there is no guarantee that interference will not incur in a particular installation. If this equipment does cause harmful interference to radio or television reception, which can be determined by turning the equipment off and on, the user is encouraged to try to correct the interference by one or more of the following measures:

- Reorient or relocate the receiving antenna.
- Increase the separation between the equipment and the receiver.
- Connect the equipment into an outlet on a circuit different from that to which the receiver is connected.
- Consult the dealer or an experienced radio/TV technician for help.



**To subscribe to programming or for assistance with using the DISH Tailgater,
call 1-800-963-DISH (3474).**

